

15 W LED Working Lamp-12210



Product name : 15 W LED Working Lamp-12210

Item : 12210

Details :

Toptree 15W LED Working Lamp

Size: 110*110*41mm (4")

Power: 15W (3W*5pcs High Power Leds)

Lum: 800Lum

Housing Material: Casting Aluminum Alloy Housing

Working Temperature: -45~85°C

Color Temperature: 6000K

Voltage: 10~30VDC

Beam: Spot/Flood Beam

Packing Details

Unit Weight: 0.6Kg/Pcs

24W LED Working Lamp-913



Product name : **24W LED Working Lamp-913**

Item : **913**

Details :

24 W LED Working Lamp/work light

Size: 110*110*51mm (4")

Power: 24W (3W*8pcs High Power Leds)

Lum: 1300Lum

Housing Material: Casting Aluminum Alloy Housing

Working Temperature: -45~85°C

Color Temperature: 6000K

Voltage: 10~30VDC

Beam: Spot/Flood Beam

Life Time: ≥50000hours

Application: Auxiliary lamp for SUV,UTV,ATV,Racing,Truck,Agricultural vehicles,Heavy Machinery etc

Packing Details

Unit Weight: 0.6Kg/Pcs

Carton Size: 37*31*28CM

Qty: 20Pcs/Carton

GW/NW: 13/12Kg



HOT SELL 15W LED Working Lamp

Product name : HOT SELL 15W LED Working Lamp

Item : 908

Price :

Details :

Model	908		
FOB Price	US\$14.0/Pcs		
Size	110mm*110mm*41mm	Voltage	9-33V DC
Power	15W (3W*5pcs High Power Leds)		
Beam	Lum	Beam Angle	
Spot	950	30°	
Flood	950	60°	
Housing Material	Casting aluminium with heatsink		
Operating Temperature	-40℃~+120℃	Color	Black
Color Temperature	6500k	IP Rating	IP67
Lens Material	PMMA	Lifetime	≥30,000
Application	Work/Spot/Day/Fog lamp Available in the auxiliary lamp for SUVs bumper, ATV, fire engine, ambulance and car, beach-buggy		



Product name : **48W Cree LED Work Light**

Item : **821**

Details :

Item No.821. Power: 48W . Voltage: DC 9-50V

. LEDs: 16PCS*3W (USA CREE LED)

. Size: 125*155*88 mm

. Luminous flux: 2600 LM

. 30000 hours above life time

. Color Temperature: 5000K,6500K,8000K

. Beam: Pencil Beam, Flood beam (60 degree)

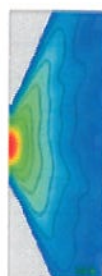
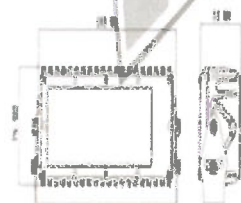
. Vibration: 20G rms24 - 2000Hz

. Waterproof rate: IP68

Product Description

1. 48W LED work light use the CREE LED chip
2. LED work light back cover and front cover can be apart; easy to install and change.
3. The shell of the lights is made of high-pure aluminum alloy, electrostatic coating, thermostatic hardening and excellent adhesion.

8"



LED Light Bar 610

Model	610		
Size	188*76*54mm (8")	Voltage	10-30V
Power	30W (3W*10pcs High Power Leds)		
Beam	Flood		
Lum	1200	Beam Distance	50M
Housing Material	Casting aluminium with heatsink		
Application	Auxiliary lamp for SUV,UTV,ATV,Racing, Truck,Agricultural vehicles,Heavy Machinery etc		
Carton Size	43*26*38CM	Qty	20Pcs
GW/NW	18/17Kg		